

New South Wales Australian National Football League PROGRAMME OF MATCHES — SEASON 1956

(1) 7th/8th APRIL.

Newtown 19-14 (118) d. Balmain 7-13 (55).
West. Subs. 24-16 (160) d. Uni. 7-12 (54).
E. Subs. 21-23 (149) d. N. Shore 10-13 (73).
Sth. Sydney 12-4 (76) d. L'pool 8-17 (65).
St. Geo. 14-13 (97) d. S.-Naval 21-15 (141)
on protest.

(2) 14th/15th APRIL.

Newtown 13-13 (91) d. W. Subs. 10-4 (64).
S.-Naval 14-11 (95) d. Balmain 12-13 (85).
Univ. 19-6 (120) d. Liverpool 13-18 (96).
St. Geo. 13-17 (95) d. N. Shore 10-9 (69).
E. Subs. 14-11 (95) d. S. Syd. 10-24 (84).

(3) 21st/22nd APRIL.

W. Subs. 9-12 (66) d. E. Subs. 8-12 (60).
St. Geo. 17-14 (116) d. Balmain 5-12 (42).
S. Syd. 13-13 (91) d. University 10-9 (69).
N. Shore 13-11 (89) d. Newtown 11-15 (81).
S.-Naval 13-21 (99) d. Liverpool 9-9 (63).

(4) 28th/29th APRIL.

E. Subs. 11-13 (79) d. University 11-7 (73).
Newtown 7-12 (54) d. S. Syd. 5-14 (44).
W. Subs. 13-11 (89) d. St. Geo. 9-14 (68).
S.-Naval 14-22 (106) d. N. Shore 13-16 (94).
Balmain 17-13 (115) d. L'pool 13-12 (90).

(5) 5th/6th MAY.

E. Subs. 10-19 (79) d. S.-Naval 11-10 (76).
Balmain 11-8 (74) d. University 10-11 (71).
St. Geo. 10-18 (78) d. Newtown 10-11 (71).
S. Syd. 21-12 (138) d. N. Shore 16-13 (109).
W. Subs. 21-21 (147) d. L'pool 5-4 (34).

(6) 12th/13th MAY.

S. Syd. 15-15 (105) d. Syd.-N. 14-14 (98).
W. Subs. 21-20 (146) d. Balmain 6-6 (42).
St. Geo. 17-15 (117) d. Uni. 10-12 (72).
E. Subs. 9-8 (62) d. Newtown 6-15 (51).
N. Shore 23-17 (155) d. L'pool 10-7 (67).

(7) 19th/20th MAY.

E. Subs. 18-15 (123) d. L'pool 16-13 (109).
St. Geo. 14-14 (98) d. S. Syd. 11-22 (88).
Newtown 17-20 (122) d. Univ. 3-4 (22).
N. Shore 6-18 (54) d. Balmain 6-11 (47).
W. Subs. 8-26 (74) d. S.-Naval 6-8 (44).

(8) 26th/27th MAY.

St. Geo. 15-12 (102) d. E. Subs. 12-9 (81).
Newtown 9-14 (63) d. L'pool 6-10 (46).
W. Subs. 12-15 (87) d. N. Shore 9-12 (66).
S. Sydney 13-14 (92) d. Balmain 13-8 (86).
Syd.-Naval 19-19 (133) d. Uni. 8-7 (55).

(9) SATURDAY, 2nd JUNE.

North Shore v. University, Trumper.
St. George v. Liverpool, Hurstville.

SUNDAY, 3rd JUNE.

Canberra v. N.S.W., Trumper.

MONDAY, 4th JUNE.

Eastern Subs. v. Balmain, Trumper.
Newtown v. Sydney-Naval, Erskineville.
South Sydney v. Western Subs., Concord.

(10) SATURDAY, 9th JUNE.

University v. Western Suburbs, Trumper.
Newtown v. Balmain, Erskineville.
St. George v. Sydney-Naval, Hurstville.

SUNDAY, 10th JUNE.

Eastern Subs. v. North Shore, Trumper.
Liverpool v. South Sydney, Rosedale.

(11) SATURDAY, 16th JUNE.

Sydney-Naval v. Balmain, Trumper.
Western Subs. v. Newtown, Concord.

SUNDAY, 17th JUNE.

Eastern Subs. v. South Sydney, Trumper.
North Shore v. St. George, North Sydney.
Liverpool v. University, Rosedale.

(12) SATURDAY, 23rd JUNE.

Sydney-Naval v. South Sydney, Trumper.
North Shore v. Liverpool, Erskineville.
Western Suburbs v. Balmain, Concord.
University v. St. George, University.

SUNDAY, 24th JUNE.

Eastern Suburbs v. Newtown, Trumper.

(13) SATURDAY, 30th JUNE.

Sydney-Naval v. Liverpool, Trumper.
South Sydney v. University, Erskineville.
St. George v. Balmain, Hurstville.

SUNDAY, 1st JULY.

Eastern Subs. v. Western Subs., Trumper.
North Shore v. Newtown, North Sydney.

(14) SATURDAY, 7th JULY.

Eastern Suburbs v. University, Trumper.
Western Subs. v. St. George, Concord.
North Shore v. Sydney-Naval, Gore Hill.

SUNDAY, 8th JULY.

Newtown v. South Sydney, Trumper.
Liverpool v. Balmain, Rosedale.

(15) SATURDAY, 14th JULY.

Eastern Subs. v. Balmain, Trumper.
Western Subs. v. South Sydney, Concord.
St. George v. Liverpool, Hurstville.
University v. North Shore, University.

SUNDAY, 15th JULY.

Newtown v. Sydney-Naval, Trumper.

(16) SATURDAY, 21st JULY.

North Shore v. Balmain, Trumper.
St. George v. South Sydney, Erskineville.

SUNDAY, 22nd JULY.

N.S.W. v. Queensland, Trumper.
SATURDAY, 28th JULY.

Newtown v. University, Trumper.
Western Subs. v. Sydney-Naval, Concord.

SUNDAY, 29th JULY.

Liverpool v. Eastern Subs., Rosedale.
South Sydney v. Balmain, Trumper (from Round 17).

(17) SATURDAY, 4th AUGUST.

Sydney-Naval v. University, Trumper.

SUNDAY, 5th AUGUST.

Eastern Subs. v. St. George, Trumper.
North Shore v. Western Subs., North Syd.
Liverpool v. Newtown, Rosedale.

(18) SATURDAY, 11th AUGUST.

Eastern Subs. v. Sydney-Naval, Trumper.
University v. Balmain, Erskineville.
St. George v. Newtown, Hurstville.

SUNDAY, 12th AUGUST.

South Sydney v. North Shore, Trumper.
Liverpool v. Western Subs., Rosedale.

SATURDAY 18th AUGUST.

First Semi-final, Trumper.

SUNDAY, 19th AUGUST.

Second Semi-final, Trumper.

SUNDAY, 26th AUGUST.

Preliminary Final, Trumper.

SUNDAY, 2nd SEPTEMBER.

Grand Final, Trumper.

(Grounds subject to alteration)

K. G. FERGUSON, Hon. Secretary, N.S.W. Australian National Football League.
Sports Club, 10 Hunter Street. Phones: BL 1024. FJ 2570.

A. H. JENSEN, Printer, Bondi Junction. FW 3309.

June 3

1956

PRICE 6d.

The Australian National Football Record



LISTEN TO

A.B.C. SPORTING SERVICE

6.30 p.m.—Mon. to Thurs.: "SPORTING HIGHLIGHTS" (Not Regionals)
6.30 p.m.—Friday: "SPORTSMAN'S PARADE" (Australian Rules Previews)
7.45 p.m.—Friday: "A.B.C. SPORT SHOW"
9.00 a.m.—Saturday: "SPORTING MAGAZINE."
6.30 p.m.—Saturday: "SPORTING ROUND-UP."

RESULTS ALL GAMES SYDNEY AND MELBOURNE

2FC

TUNE TO
REGIONALS

2NA

MICK SIMMONS RANGE OF RULES BALLS

Ross Faulkner's MATCH II NATIVE BRAND

A really top quality ball, made from specially selected leathers, full size, hand sewn. Shape guaranteed. The "Native Brand" is the official football for Australian National Football Carnivals and International Matches. It was the only ball used in the Australian Goal-Kicking Records.
Case 68/9
Complete with bladder 78/9



THE LYRE BIRD CARNIVAL

Made from specially tanned high-grade chrome leather, with hand-sewn seams. Fully guaranteed. Case only 68/9
Complete with "Ezy-Flate" bladder, fluid and needle, 18/- extra.



MICK SIMMONS

720 GEORGE STREET, HAYMARKET, SUBURBS & NEWCASTLE

COMPETITION TABLE

FIRST GRADE.

	W.	L.	D.	For	Agst.	Pts.
West. Subs. ...	7	1	—	833	459	28
St. George ...	7	1	—	771	653	28
East. Subs. ...	6	2	—	728	634	24
Newtown	5	3	—	656	460	20
Sth. Sydney ..	5	3	—	718	674	20
Syd.-Naval ...	4	4	—	756	619	16
Nth. Shore ...	3	5	—	709	770	12
Balmain	2	6	—	546	782	8
University	1	7	—	536	872	4
Liverpool	—	8	—	537	867	—

RESERVE GRADE.

	W.	L.	D.	For	Agst.	Pts.
East. Subs. ...	8	—	—	413	133	32
St. George ...	7	1	—	492	206	28
Sth. Sydney ...	5	3	—	459	305	20
Newtown	5	3	—	340	247	20
Nth. Shore ...	5	3	—	347	249	20
West. Subs. ...	4	4	—	258	288	16
Syd.-Naval ...	3	5	—	354	368	12
Liverpool	2	6	—	177	447	8
University ...	1	7	—	131	545	4
Balmain	—	8	—	171	364	—

LEADING GOAL-KICKERS

FIRST GRADE.

T. Ingersoll (W.S.)	48
M. Mayo (N.S.)	37
G. Ritchie (E.S.)	24
D. Wilson (S.-N.)	24
J. Shattock (Uni.)	22
L. McNulty (L.)	19
W. Hawkins (S.S.)	19
J. Courtney (N.)	18
K. Gleeson (Bal.)	18
B. O'Shannassy (N.)	18
J. Vizard (St. G.)	16
P. Meucke (Uni.)	15
J. Harding (S.-N.)	15
C. Quilkey (Bal.)	15
E. Wall (S.S.)	13

RESERVE GRADE.

H. Lloyd (St. Geo.)	14
K. Heales (L.)	13
N. Ralston (E.S.)	12
E. Sharpe (E.S.)	12
S. Fields (St. Geo.)	12
K. White (S.S.)	10
R. Wilkes (N.S.)	10
R. White (S.-N.)	8

CHADWICK & AVERY

456 ANZAC PARADE, KINGSFORD

SPECIALISING IN ALL SMASH AND INSURANCE WORK

PANEL BEATING, DUCO SPRAYING, CHROME AND FILLING EXPERTS

... also ...
ALL MECHANICAL WORK

FF 4010

::

FF 4010

self as a fine leader. Small and fast, he is clever and will combine with Burke.

KEITH THOMPSON: The Combine's big defender, played in the Riverina before coming to Canberra. It is his second appearance in representative football, having played against Tasmania last year.

IAN PARSONS: Came from the Wimmera League to join Manuka, where he has been prominent both as a winger and a half-forward flank. In his first big game he is expected to do well.

ALAN BEARD: A fast left-foot utility player from Turner who can rise to great heights. Has been handicapped by injuries this year, suffering a badly broken nose in the first game.

JIM MACAFEE: Half-back flank. Played well in Queensland and expected to do so again. Is used as a utility man by his club, Eastlake, but plays best in defence.

JIM SHELDRIK: Star sprinter of R.M.C., has been chosen as an emergency. Usually plays half-forward; likes big ground to use undoubted pace.

NEVILLE SMETHURST: In his final year at R.M.C. Is a clever centre-line player who consistently shines for his side, of which he is captain. He is a boxer of note and last year in the finals fought as a welterweight. A former resident of Victoria, he learned his football at College.

KEN WILLIAMS: A notable half-forward who has represented Canberra on many occasions. He is an intelligent footballer of deceiving appearance who makes the most of any opportunity.

JOHN MOODY: R.M.C.'s big follower. Is in his second year and had the distinction of being chosen against Tasmania in his first season. Learning his football in Adelaide, he was a prominent Public Schools' player before joining R.M.C.

PEN SKETCHES OF CANBERRA PLAYERS

RAY DONNELLAN: Captain-Coach—aged 29, ex-Fitzroy player. Ray has been playing football in Canberra for the past 2½ years with the Manuka Club which he coached into the premiership last season. A fine high mark and a player of great determination Ray has earned the high regards of all players and supporters in Canberra.

BARRY BROWNING: Winner of the C.A.N.F.L. best and fairest trophy the "Mulrooney Medal" last season. A young player for Ainslie in whom the Victorian team Geelong has been interested. A fine mark, and excels in ground play where his pace and determination earn him more than his share of kicks.

ERN. HINCKSMAN: Centre-half forward. A powerfully built local boy whose play this year for Queanbeyan-Acton has indicated that he and full-forward Lindsay White are going to take some beating. A beautiful kick for goal and in passing, sure hands and robust play made Ern. a logical choice for the Representative side.

LOU PINI: A veteran of the game in Canberra; locally known as the "biggest" small man in the game here. Lou has been utilised by the Manuka Club as a ruck-rover and as such has given sterling service.

GERALD BURKE: Ruckman. Recruited from the Carlton Club, Melbourne, as Captain-coach of last year's premiers, Manuka. Gerald is a ruckman who spells in the back pocket. A powerfully built man, he is a fine mark and uncanny in his ruck hit-outs.

MICK LETTS: A Ruckman whose size belies his ability in such a position. Mick is in his second year in Canberra, having returned from Germany where he was stationed for some years. He originally hails from the home of football—Victoria—where he played with Prahran. He plays with

Manuka.

JIM BURDEN: Winger and Rover from the Eastlake Club. Has progressed up through the junior ranks and at 26 is a veteran of Canberra Football, having represented three times. A very unselfish and brainy player.

ALAN MUIR: From the Queanbeyan-Acton Club. Alan just played his 100th game with his club, the majority of which have been on the half-back line. A sure mark and a good kick. Alan has represented four times.

DON ROSS: Half-forward from Ainslie. The majority of football critics in Canberra consider "Rossie" the best half-forward to have ever played here. An effortless player, he has everything that makes a footballer.

JIM MUIR: Half-back. Brother of Alan from Queanbeyan-Acton. A utility player who has given sterling service with the club. Jim has sure hands, is a fine kick and his pace earns him more than his share of kicks.

ROY WATTERSTON: Since coming to Canberra, where he is a very popular figure, has twice won the Mulrooney Medal, the League's best and fairest award. To-day appears in an unusual role as full-back, but has the talent to play anywhere. Roy is well known to Sydney "fans," who are sure to give him a big welcome.

LINDSAY WHITE: Now in his thirties, is still a dangerous forward, in which position he represented Victoria on three occasions. He formerly played with Geelong and later had great success in Ballarat League. He coaches Queanbeyan-Acton and has kicked forty goals in five games.

GERRY WALSH: Rover. Came from Oakleigh to coach Eastlake, where he has already established him-

LEAGUE PRESIDENT WELCOMES VISITORS

On behalf of the members of the New South Wales Australian National Football League and affiliated bodies, it gives me extreme pleasure in extending a hearty welcome to the visiting team from the Australian Capital Territory.

During the past ten years our teams have been in opposition on seven occasions, with five wins to New South Wales and two to the A.C.T. Two successes for New South Wales were by the small margins of three and four points respectively. The overall position, therefore, reveals a healthy rivalry.

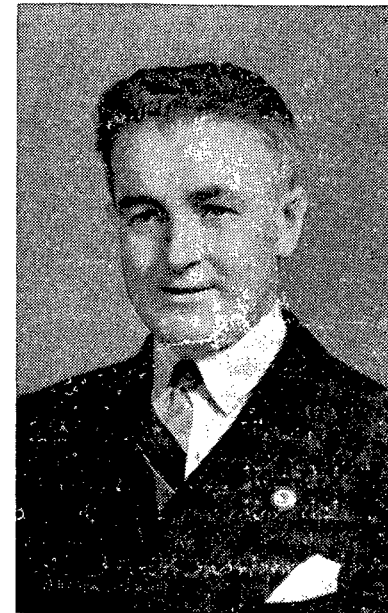
Reports indicate the Australian code has made remarkable progress in the Federal Capital, with each of the senior clubs housed in modern clubrooms.

The standard of play has reached its highest peak and we look forward to to-day's encounter with keen anticipation.

To-day's programme also includes a New South Wales Second team against Combined Services. The latter side has been chosen from the Mid-week Inter-services Association, comprising nine teams competing in mid-week competition.

These fine service players are absorbed in the various district club teams. Thus, this afternoon patrons will have the opportunity of viewing sixty of the League's leading players in action.

May I remind any "big occasion"



A. J. SNOW
President, N.S.W.A.N.F.L.

patrons that in Sydney we have an exciting competition in progress, and for thrilling, exhilarating football they can do no better than become regular followers of Australia's National Football game.

A. J. SNOW,
President, N.S.W.A.N.F.L.

ALAN KIPPAX SPORTS STORE

26 MARTIN PLACE — 'Phone: BW 8284

SHERRIN, FAULKNER, CARNIVAL BALLS
SPECIAL SHORTS, BOOTS, HOSE

Reserve Grade Scores.

(Round 2)

Eastern Suburbs 5-6 (36) d. St. George 4-5 (29).

North Shore 6-11 (47) d. Western Suburbs 3-6 (24).

South Sydney 5-8 (38) d. Balmain 2-8 (20).

Newtown 5-13 (43) d. Liverpool 3-0 (18).

Sydney-Naval 15-8 (98) d. University 3-6 (24).

CLUB SOCIAL NOTES

SOUTH SYDNEY: "Fetch It" Cabaret, Friday, 8th June, at Alexandria Town Hall. Tickets 5/- each from Mr. Alby Young.

EASTERN SUBURBS: "Back to Childhood" Cabaret at Masonic Hall, Double Bay, Friday, 8th June. Tickets 5/- each. Picnic supper. See Mr. Paul Clarke for further details.

SYDNEY-NAVAL: Popular Dance, Saturday, 13h June, at Waterloo Town Hall. Make a note of this date. Everyone welcome.

ITEMS OF INTEREST

The sixty first grade Sydney players in action this Sunday presents an excellent opportunity for the State Selectors (Messrs. Leo Harry, Bill Kernick and Frank Larkin) to observe and note performances with a view to selection of the N.S.W. team to play Queensland at Brisbane on 4th and 7th July.

* * *
Congratulations to Mr. Wal Craig on being entrusted with the N.S.W.-Canberra match. Wal was formerly a clever centreman for South Sydney before taking up umpiring several

seasons ago.

* * *
Included in the visiting Canberra side is Lindsay White, who formerly played for Geelong and later had great success in the Ballarat League. He is coach of the Queanbeyan-Acton Club and this season has kicked 40 goals in five matches.

100 YARDS IN BEST KICKS

Several times an Australian Rules footballer has kicked a ball more than 100 yards.

But the average kick, with a dry ball, is between 60 and 70 yards.

Four types of kicks are used in Australian football.

Place Kicks (at practice): 107 yds. 2ft. 1in.: A. J. Thurgood (Essendon), at East Melbourne C.G. (assisted by a slight breeze). 105 yds. 1ft.: D. J. McNamara (St. Kilda), at St. Kilda C.G., 1914 (slight wind assistance). 103 yds. 2ins.: J. Leith (Melbourne), at M.C.C. Ground, 1905 (slight wind assistance).

Place Kicks (in competition): 91 yds. 1ft.: F. C. Cooper (Western Aust. Imperials), at Fremantle, 1895. 89 yds. 2ft.: D. J. McNamara (St. Kilda), at S.C.G., 1914.

Drop Kicks: 84 yds.: F. Hughson (Fitzroy) against W. Jost (U.S.A.), at Fitzroy C.G., August, 1943. 74 yds. 1ft.: H. A. Nudd (Carlton), at Princes Oval, 1881. 73 yds. 2ft.: R. W. Green (Sturt, S.A.), at Sturt Oval, 1936.

Punt Kicks: 74 yds. 2ft. 6in.: L. W. Kew-Ming (North Melbourne), at Echuca, 1928. 74 yds. 1ft.: F. H. Caine (Carlton), at Exhibition Oval (Melbourne), 1907.

MATCHES FOR NEXT WEEK-END

Round 10 — Saturday, 9th June, 1956:

UNIVERSITY v. WESTERN SUBURBS Trumper Park
NEWTOWN v. BALMAIN Erskineville Oval
ST. GEORGE v. SYDNEY-NAVAL Hurstville Oval

Sunday, 10th June, 1956:

EASTERN SUBURBS v. NORTH SHORE Trumper Park
LIVERPOOL v. SOUTH SYDNEY Rosedale Park

RESERVED

FOR

MARSH McMAHON

NORMAN WILSON (Ex St. Geo.
A.N.F.C.)
DULWICH HILL FLORIST

Deliveries Anywhere — Phone: LM 1505, Day or Night

FOR ALL FLORIST WORK

Wreaths at Shortest Notice — Wedding Bouquets a Speciality

415 NEW CANTERBURY ROAD, DULWICH HILL — LM 1505

Compliments of
Messrs. AMBROSOLI & THOMPSON PTY. LTD.
Manufacturing Tailors, 342 Elizabeth Street, City — MA 3508

KEY TO RULES



Main features of the Australian game are:—

FIELD SIZE.

Oval shaped, to be between 150 yards to 200 yards long, and between 100 yards to 150 yards wide at widest part.

The playing field at Trumper Park is 150 yards in length and this will be increased to 160 yards when the present work in progress is finished.

SCORE POSTS.

Are placed at the apex at each end of area. Two high posts in the centre, placed 7 yards apart, are known as goal-posts, and one shorter post placed 7 yards to the side of each goal-post are known as behind posts.

GOAL AREA.

A line drawn straight from the goal-posts for a distance of 10 yards towards the centre of the playing

field. Cross-bars are not used on any set of posts.

CENTRE.

A circle drawn in centre of ground to be 10 yards in circumference. The umpire bounces the ball in this circle to start the game.

UMPIRES.

Consist of the central umpire, two boundary umpires (one on each side of field), and two goal umpires (one at each end of field at goal-posts).

SCORING.

A ball kicked untouched between the goal-posts scores a goal (six points). A ball which is kicked and hits a goal-post or passes between a goal and point post, or is carried or forced through the goal-posts, is counted as a behind (one point). If a ball strikes a behind post it is out of bounds and no score.

COMBINED SERVICES' ASSOCIATION

The Combined Services' Association team has been selected from the nine teams which play in the Mid-Week Competition. A vast majority of these servicemen play for teams in the week-end competition and help to maintain the standard of Australian Football in N.S.W. The teams chosen to-day is made up almost entirely of players known to the football public

of N.S.W. It is also noteworthy that a number of servicemen are in the N.S.W. 1st Eighteen playing to-day. The Combined Services' Association is the means whereby visiting servicemen from other States receive the opportunity of playing our national game, and produces new players for our week-end competition. This season the N.S.W. Police Force entered a team in the competition and at present they are undefeated.

FLEXHIDE PTY. LTD.

Merchants, Engineers' Suppliers

Head Office: CROWN & OXFORD STREETS, SYDNEY
Branches: Alexandria & Lidcombe

COL MASON'S DELICATESSEN

63 RAILWAY PARADE, KOGARAH — LW 3523

SPECIAL DISCOUNT TO CATERERS, CLUBS, Etc.
PLAYFAIRS CELEBRATED SMALLGOODS A SPECIALITY
SELECTED IMPORTED FOODS

TRUMPER PARK

Field Umpire: A. W. SMITH.

Boundary:

N. HICKMOTT, P. DAFFIN.

Goals:

G. SIMPSON, K. O'BRIEN.

N.S.W. 2ND TEAM

(Black and Gold)

- 1—G. SCHROEDER (N.)
- 2—J. VIZARD (St. G.)
- 3—J. EGAN (N.)
- 4—J. COURTNEY (N.)
- 5—A. ELLIOTT, V.-Capt. (E.S.)
- 6—J. SHATTOCK (Uni.)
- 7—J. FULLER (N.S.)
- 8—L. BYRNES (N.S.)
- 9—J. SUTHERLAND (N.S.)
- 10—K. SCHOW (St. Geo.)
- 11—W. BOLITHOE, Capt. (St. Geo.)
- 12—K. LONGLEY (Bal.)
- 13—C. QUILKEY (Bal.)
- 14—P. KUSCHERT (W.S.)
- 15—K. GLEESON (Bal.)
- 16—M. JENNINGS (St. Geo.)
- 17—R. SPARKE (N.)
- 18—D. WILSON (E.S.)
- 19—B. LARKIN (Uni.)
- 20—A. DICKSON (N.)

Manager: Mr. A. YOUNG.

COMB. SERVICES

(Blue and White)

- 1—J. BARTLETT (Army)
- 2—B. CYZSLOWSKI (Army)
- 3—B. ANDREWS (Police)
- 4—B. ZILKO (Navy)
- 5—D. ATHERTON (Army)
- 6—D. COULSON (Navy)
- 7—L. PRATT (Navy)
- 8—J. COCO (Police)
- 9—T. BANFIELD (Army)
- 10—N. NEAL (Navy)
- 11—K. LITTLE, Capt. (Police)
- 12—T. FREE (Navy)
- 13—D. RICHARDS (Navy)
- 14—C. MAYNARD (Army)
- 15—A. WELLS (Navy)
- 16—E. DYBALL (Navy)
- 17—N. STEVENS (Police)
- 18—G. BARNES (Navy)
- 19—J. McKEON (Army)
- 20—R. ANDERSON (Army)
- 21—B. HUTCHINSON (Navy)
- 22—D. ASKINS (Navy)
- 23—N. MILLS (Army)

Manager: Mr. V. W. FRILAY.

Timekeeper: Mr. C. BITMEAD.

PEP UP THAT PARTY, DANCE OR SOCIAL

ROSS STREET RAMBLERS

DIXIELAND BAND
POPULAR BAND OF RECENT AUSTRALIAN JAZZ CONVENTION
Phone DOUG. LAMPARD — FA 4798

SCORING CARD

	Goals	Behinds	Points	Goals	Behinds	Points
1st quarter						
2nd quarter						
Goal-kickers						

SCORING CARD

	Goals	Behinds	Points	Goals	Behinds	Points
3rd quarter						
Final						
Goal-kickers						

TRUMPER PARK

Field Umpire: W. CRAIG.

Boundary:
H. BUCKLEY, N. FULLER.

CANBERRA

(Royal Blue and Gold)

- 1—A. MUIR
- 2—G. BURKE
- 4—L. WHITE, V.-Capt.
- 5—J. MOODY
- 6—E. HINCKSMAN
- 7—A. BEARD
- 8—R. WATTERSTON
- 9—K. WILLIAMS
- 10—D. ROSS
- 11—I. PARSONS
- 12—B. BROWNING
- 13—R. DONNELLAN, Capt.
- 14—J. MACAFEE
- 16—G. WALSH
- 18—M. LETTS
- 19—K. THOMPSON
- 20—J. MUIR
- 21—K. PISI
- 22—N. SMETHURST
- 23—J. BURDEN
- 24—J. SHELDRICK

Manager: Mr. R. BESLEY.

Timekeeper: Mr. W. TOWNSEND.
Ground Manager: Mr. R. MEYERS.

Goals:
G. MARAUN, E. J. GRIFFIN.

NEW SOUTH WALES

(Light Blue)

- 1—F. PEMBERTON (W.S.)
- 2—W. HAWKINS (N.S.)
- 3—A. McCRUDDEN (N.)
- 4—R. MOORE, Capt. (Bal.)
- 5—N. ROBSON (S.-N.)
- 6—K. WILLIAMS (S.S.)
- 7—A. PILLING, V.Capt. (N.)
- 8—G. HEWITT (Liv.)
- 9—T. INGERSOLL (W.S.)
- 10—R. TURNER (S.S.)
- 11—F. HAMMER (N.S.)
- 12—J. DULLARD (St. G.)
- 14—J. KUSCHERT (W.S.)
- 15—G. McDERMOTT (S.S.)
- 17—J. DEAN (E.S.)
- 18—H. PARKER (N.)
- 19—R. MILLINGTON (E.S.)
- 20—J. CHESTER (S.S.)
- 21—J. HARDING (S.-N.)
- 22—I. HART (Uni.)

Manager: Mr. E. McFARLANE.

Sherrin's
"Kangaroo Brand"
Footballs

FOREMOST SINCE 1880



Used in all the Principal Games by the various State Leagues. Recommended by New Zealand All Blacks and English Rugby Teams.

Obtainable from all Sports Depots

T. W. SHERRIN
PTY. LTD.



(TOM SHERRIN, Governing Director)

32 WELLINGTON STREET,
COLLINGWOOD

ROSS
FAULKNER'S
NATIVE BRAND
FOOTBALLS



The only ball used by both the Victorian Football League and Victorian Football Association.



Ross Faulkner's Native Brand is selected by Australian National Football Council and for Interstate Matches, V.F.L., V.F.A., South Australia, Tasmania, N.S.W., Queensland, and Canberra Football Leagues. The only ball used in Australian goal-kicking record.

SILENT KNIGHT

Sole Manufacturers:

HALLSTROM'S PTY. LTD., 462 Willoughby Road, Willoughby
N.S.W. — Phone: XL 2001 (10 lines)

The People's Refrigerator at the People's Price.



Operates either by a small Gas Jet, a Kerosene Lamp, or an Electric Element.



Superior Manufacture :: Rust-Proof :: Tropic-Proofed